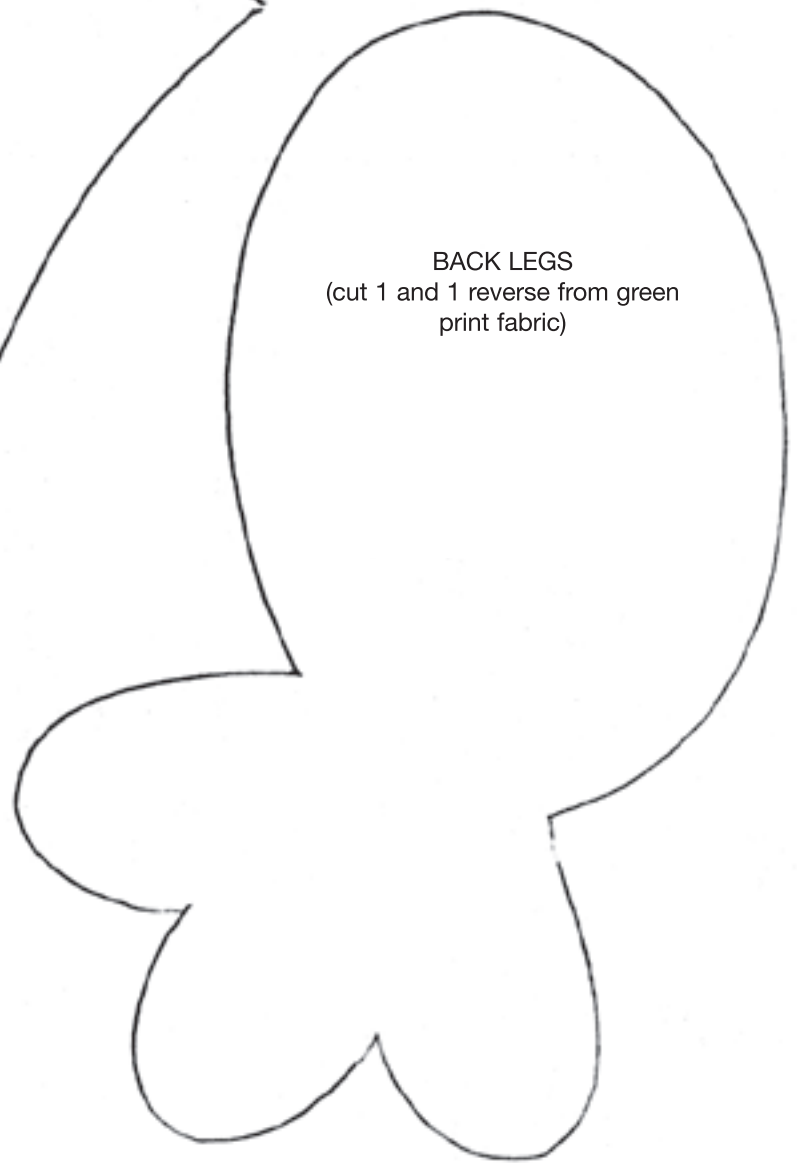
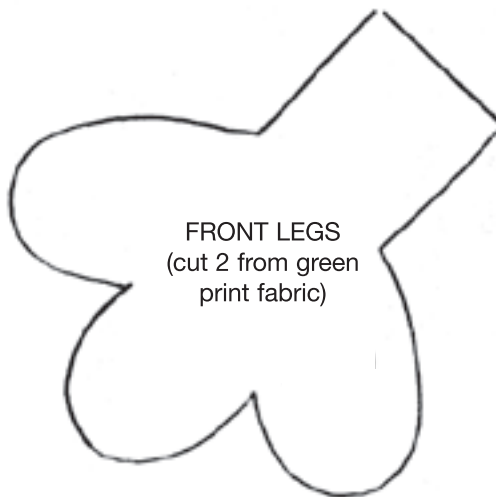


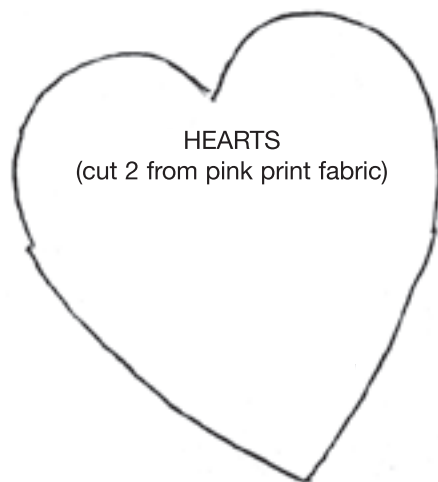
CROWN
(cut from yellow print fabric)



BACK LEGS
(cut 1 and 1 reverse from green
print fabric)



FRONT LEGS
(cut 2 from green
print fabric)



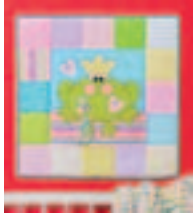
HEARTS
(cut 2 from pink print fabric)

Prince Charming Wall Hanging & Quilt
10 patterns

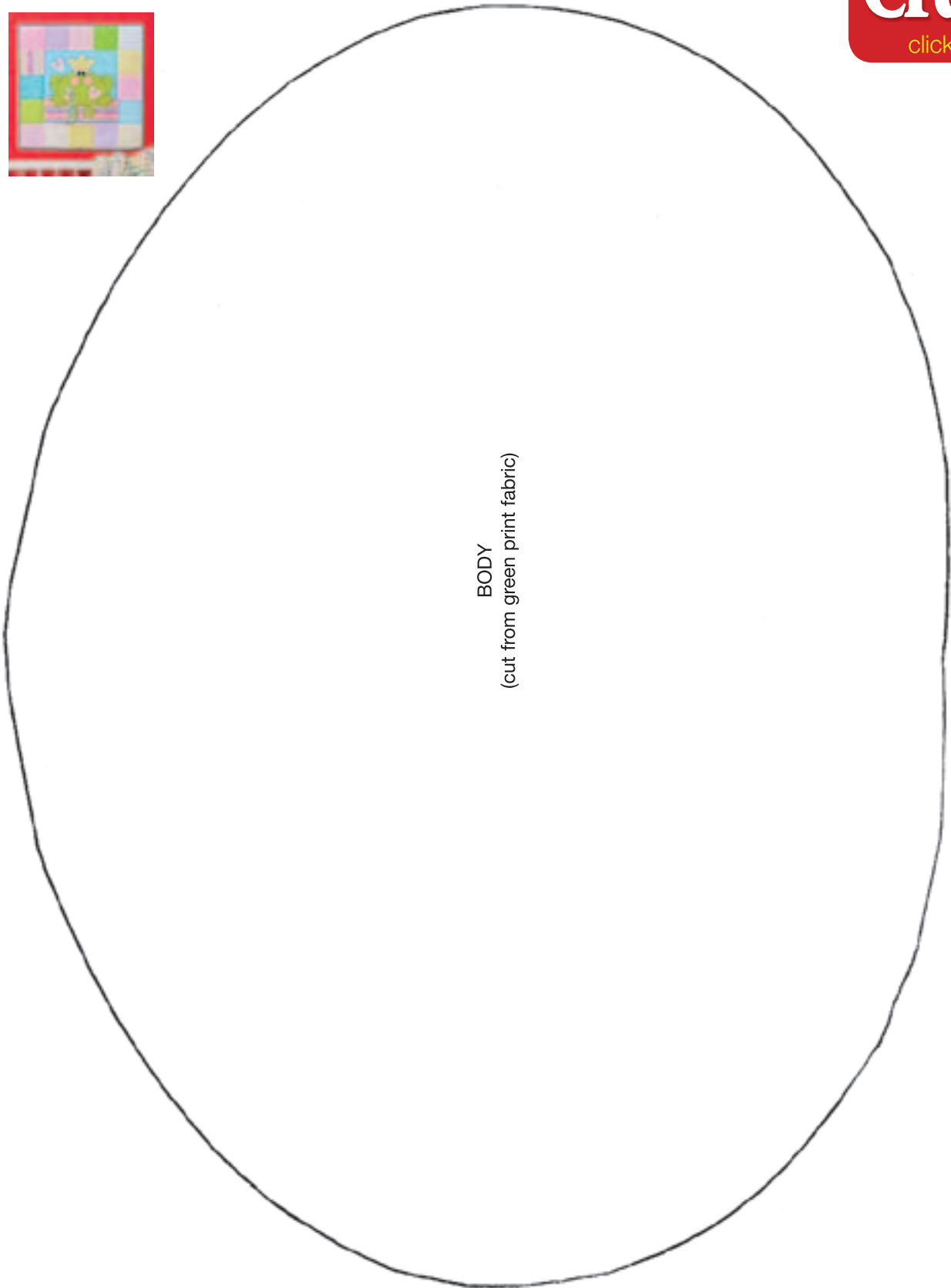


Prince Charming Wall Hanging & Quilt

10 patterns



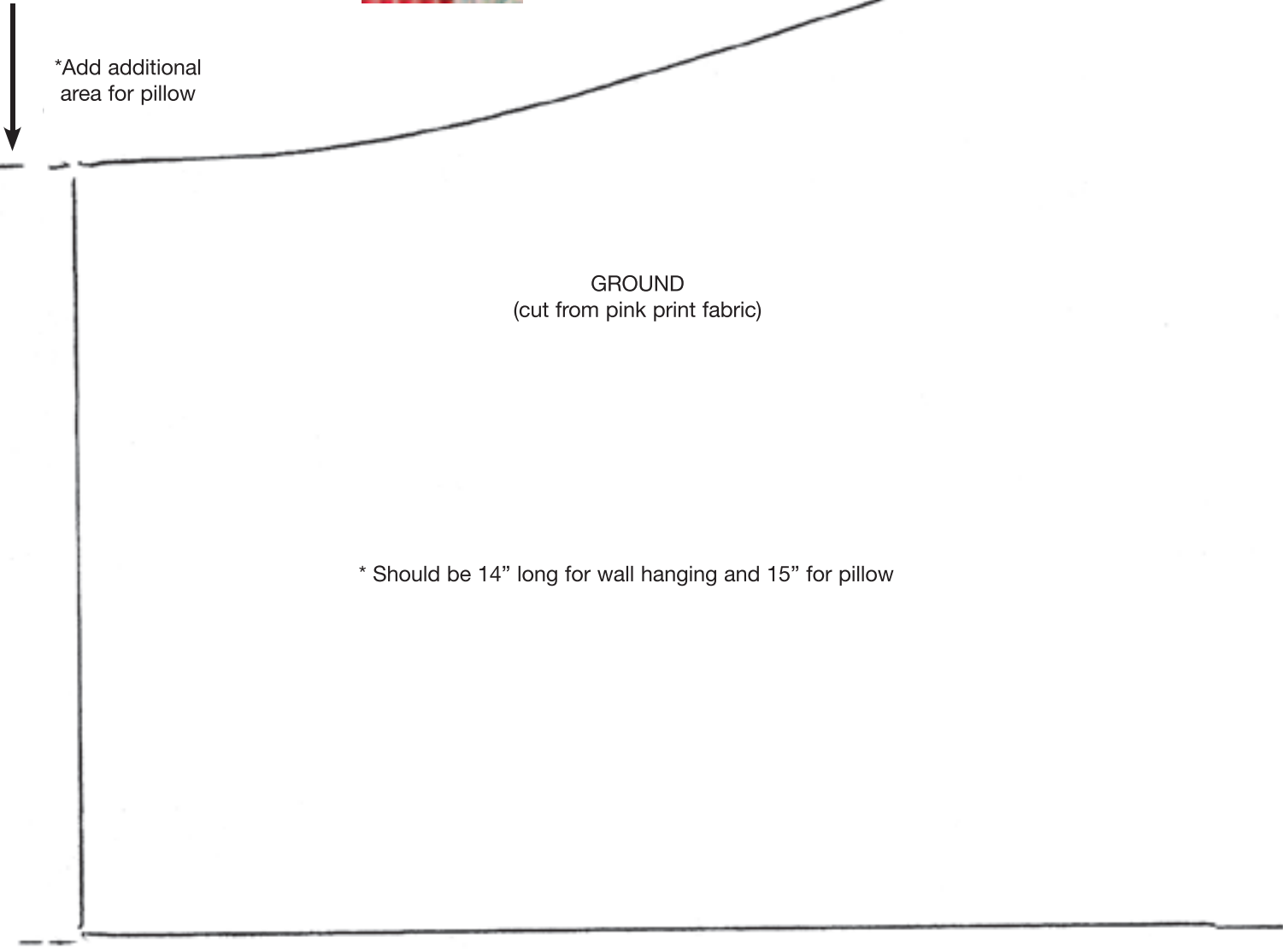
subscribe to
Crafts
'n things®
click here!



BODY
(cut from green print fabric)

Prince Charming Wall Hanging & Quilt

10 patterns



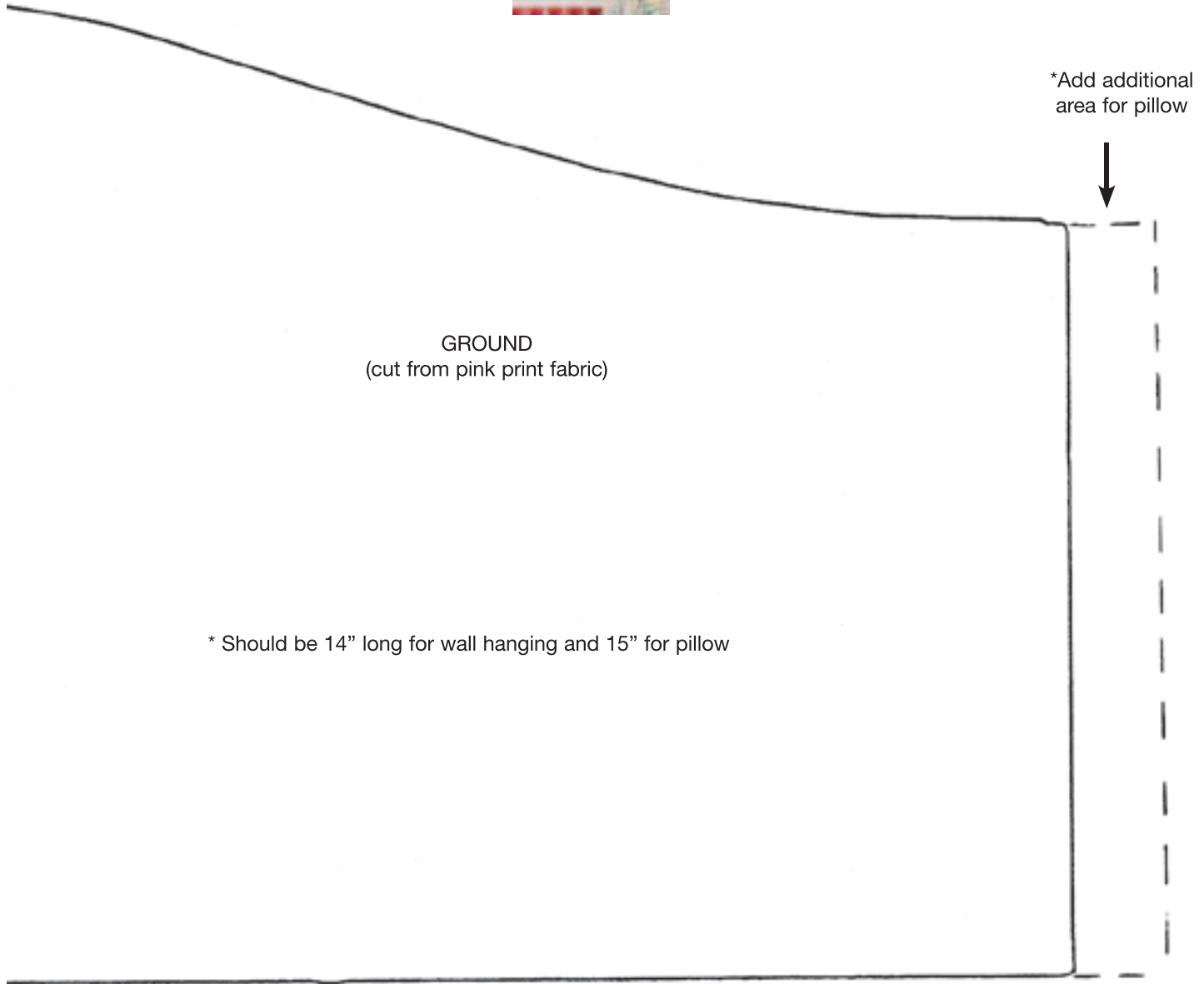
*Add additional area for pillow

GROUND
(cut from pink print fabric)

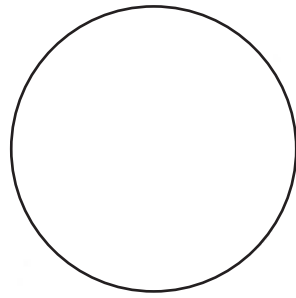
* Should be 14" long for wall hanging and 15" for pillow

Prince Charming Wall Hanging & Quilt

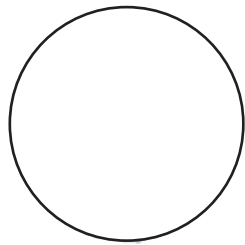
10 patterns



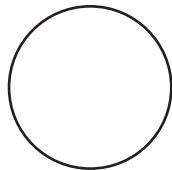
* Should be 14" long for wall hanging and 15" for pillow



CHEEKS
(cut 2 from pink print fabric)



EYES
(cut 2 from white fabric)



PUPILS
(cut 2 from black fabric)



MOUTH
(transfer stitching between cheeks)

Prince Charming Wall Hanging & Quilt

10 patterns

